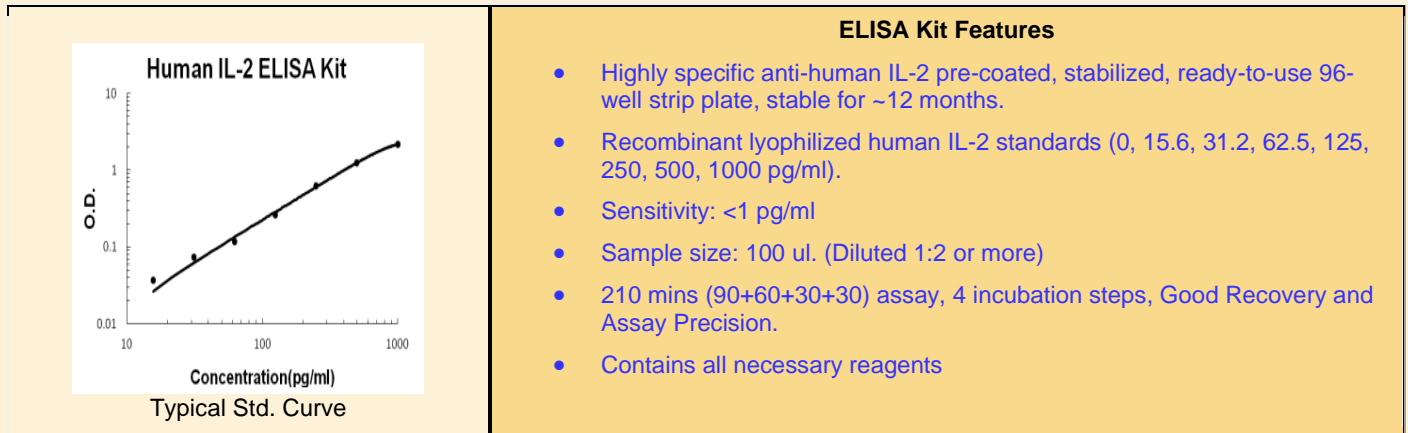


## Human IL-2 ELISA Kit, Cat# 100-410-IL-2, 96 Tests

This ELISA kit detects the presence of Interleukin -2 (IL-2) in human serum, plasma and other biological fluids (culture medium). For in vitro research use only.



**Assay Procedure: Allow all reagents to reach room temperature. Arrange and label required number of strips.**

- Step 1.** Pipet 100 ul each of pre-diluted stds, samples into pre coated wells. Cover and incubate at 37°C for 90 min.
- Step 2.** Discard contents. Add 100 ul of Biotinylated antibody soln. to all wells. Cover and incubate at 37°C for 60 mins.
- Step 3.** Aspirate and Wash 3X. Add 100 ul ABC working soln to all wells, mix gently, and incubate at 37°C for 30 mins.
- Step 4.** Aspirate and Wash 5X Pipet 90 ul of TMB substrate into each well, mix gently, cover and incubate at 37°C for 30 mins.
- Step 5.** Pipets 100 ul of stop soln to each well, and mix gently on a plate shaker. Blue color turns yellow. Measure absorbance at 450 nm

### Performance characteristics

First calculate the averaged optical densities for each calibrator well, and plot the averaged optical density of each calibrator versus the concentration. Interpolate test sample values from standard curve.

**Specificity & Species reactivity:** Natural and recombinant human IL-2. . No detectable cross-reactivity with other relevant proteins This kit is optimized for human samples.

### General information

Interleukin-2 (IL2), formerly referred to as T-cell growth factor, is a powerfully immunoregulatory lymphokine that is produced by lectin- or antigen-activated T cells. It is produced not only by mature T lymphocytes on stimulation but also constitutively by certain T-cell lymphoma cell lines. The lymphokine interleukin-2 (IL-2) is responsible for autocrine cell cycle progression and regulation of immune responses. IL-2 expression in mature thymocytes and T cells has been found to be tightly controlled by monoallelic expression.<sup>1</sup> IL-2 can act as a growth hormone for both B and T lymphocytes. The human gene for interleukin 2 (IL2) is assigned to chromosome 4. Human IL-2 is a 15.5KDa glycoprotein, consisting of 153 amino acids in precursor form and 133 amino acids in mature form.

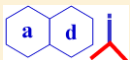
ADI's human Interleukin-2 ELISA Kit is used for the quantitative measurement of Interleukin -2 (IL-2) in human serum, plasma and other biological fluids (culture supernatant.) Kits for the detection of other Interleukins are also available. For in vitro research use only.

### Related ELISA kits

Catalog#	Product Description
6430-10	Rat interleulin-6 (rIL-6) ELISA Kit, 96 tests, Quantitative
6430-20	Mouse interleulin-6 (rIL-6) ELISA Kit, 96 tests, Quantitative
6430-30	Human interleulin-6 (rIL-6) ELISA Kit, 96 tests, Quantitative

Human-IL-2-ELISA-flr

150206P



Alpha Diagnostic Intl Inc., 6203 Woodlake Center Dr, San Antonio, TX 78244, USA; Email: [service@4adi.com](mailto:service@4adi.com)  
(800) 786-5777; (210) 561-9515; Fax: (210) 561-9544; Web Site: [www.4adi.com](http://www.4adi.com)