

INTENDED USE

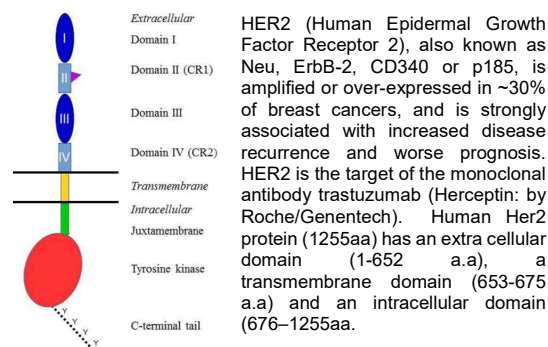
The **Mouse Anti-HER2 Protein (ECD Domain) IgG ELISA Kit** is an indirect ELISA suitable for quantifying IgG antibody activity specific for HER2-ECD in serum or plasma of vaccinated and/or immune animals.

This immunoassay is suitable for:

- Determining **immune status** relative to non-immune controls;
- Assessing efficacy of **vaccines**, including dosage, adjuvancy, route of immunization and timing;
- Qualifying and standardizing vaccine batches & protocols

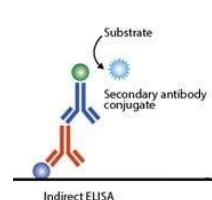
The assay is for research use only (RUO) and is not intended nor validated for diagnosing disease.

GENERAL INFORMATION



Other approaches to target HER2 use DNA-based vaccines to induce anti-HER2 antibodies in the patient. These include use of either the full-length expression of Her2 (pE2A) or extracellular or intracellular domains (pE2TM, pSec2, p185, MVA-BN-Her2). Similarly, HER2-derived peptides (e.g., E75, GP2, AE37) are being used as vaccines. The goal of these approaches is to induce antibodies that will bind native HER2 protein as with herceptin therapy. Patient antibodies to HER2 protein are not rejected nor invoke anti-drug antibodies as with herceptin.

PRINCIPLE OF THE TEST



The Anti-HER2 IgG ELISA kits are based on the binding of antibodies (IgG) in samples to the recombinant, purified HER2-ECD antigen immobilized on the microwells. Bound antibody is detected by anti-mouse IgG-HRP conjugate. After a washing step, chromogenic substrate (TMB) is added and color is developed by the HRP substrate, which is directly proportional to the amount of anti-HER2 IgG present in the sample. Stop Solution is added to terminate the reaction, and absorbance is then measured using an ELISA reader at 450nm. The presence of antibody (IgG) in samples is determined relative to anti-HER2 Calibrators.

KIT CONTENTS

The microtiter well plate and all other reagents, if unopened, are stable at 2-8° C until the expiration date printed on the box label. Stabilities of the working solutions are indicated under Reagent Preparation.

To Be Reconstituted: Store as indicated.

Component	Preparation Instructions
Wash Solution Concentrate (100x) Cat. No. WB-100, 10ml	Dilute the entire volume 10ml + 990ml with distilled or deionized water into a clean stock bottle. Label as Working Wash Solution and store at 4°C for long term and ambient temperature for short term.
Sample Diluent Concentrate (20x) Cat. No. SD-20T, 10ml	Dilute the entire volume, 10ml + 190ml with distilled or deionized water into a clean stock bottle. Label as Working Sample/Conjugate Diluent (WSD) and store at 2-8° C until the kit lot expires or is used up.
Anti-Mouse IgG-HRP Conjugate Concentrate (100x) Part: H-200-623.112, 0.15ml	Peroxidase conjugated anti-mouse IgG in buffer with detergents and antimicrobial as stabilizers. Dilute fresh as needed; 10ul of concentrate to 1ml of Working Sample/Conjugate Diluent is sufficient for 1 8-well strip. Use within the working day and discard. Return 100X to 2-8° C storage.

Ready For Use: Store as indicated on labels.

Component	Part	Amt	Contents
HER2-ECD Coated Strip Plate	200-511	8-well strips (12)	Coated with purified recombinant HER2L1, and post-coated with stabilizers.
Anti-HER2 Calibrators			
1 U/ml	200-622B	0.65 ml	Four (4) vials, each containing anti-HER2; in buffer with antimicrobial as stabilizers.
2.5 U/ml	200-622C	0.65 ml	
5 U/ml	200-622D	0.65 ml	
10 U/ml	200-622E	0.65 ml	
Anti-HER2 Positive Control	200-622-PC	0.65 ml	Antiserum with anti-HER2 reactivity; Net OD >0.5
Low NSB Sample Diluent (LNSD)	TBTm	30 ml	Buffer with protein, detergents and antimicrobial. Use as is for sample dilution. See Assay Design , page 3.
TMB Substrate	80091	12 ml	Chromogenic substrate for HRP containing TMB and peroxidase.
Stop Solution	80101	12 ml	Dilute sulfuric acid.

Materials Required But Not Provided:

- Pipettors and pipettes that deliver 100ul and 1-10ml.
- Disposable glass or plastic 5-15ml tubes for diluting samples and Anti-Mouse IgG HRP Concentrate.
- Stock bottle to store diluted Wash Solution; 0.2 to 1L.
- Distilled or deionized water to dilute reagent concentrates.
- Microwell plate reader at 450 nm wavelength and ELISA plate washer

ASSAY DESIGN AND SET-UP

Sample Collection and Handling

Serum and other biological fluids may be used as samples with proper dilution to avoid solution matrix interference. For **serum**, collect blood by venipuncture, allow clotting, and separate the serum by centrifugation at room temperature. If samples will not be assayed immediately, store refrigerated for up to a few weeks, or frozen for long-term storage.

Antibody Stability & Sample Dilution

Initial dilution of serum into **Working Sample Diluent (WSD)** is recommended to stabilize antibody activity. This enhances reproducible sampling, and stabilizes the antibody activity for years, stored refrigerated or frozen. Further dilution into **Low NSB Sample Diluent (LNSD)**, which provides the lowest assay background, should be at least 10 times the initial dilution and performed the same day as the assay.

Example: Initial (1/5): 10ul serum + 40ul WSD [or 0.1ml + 0.4ml]
Further (1/50): 10ul initial (1/5) + 90ul LNSD (1/50)

Assay Design

Review Interpretation of Results (p5-7) before proceeding:

- Select the proper sample dilutions accounting for expected potency of positives and minimizing non-specific binding (NSB) and other matrix effects; for example, net signal for non-immune samples should be lower than the **1 U/ml Calibrator**. This is usually 1:100 or greater dilution for mouse serum with normal levels of IgG and IgM.
- Run the Anti-HER2 Positive Control; net OD >0.5.
- Run a Sample Diluent **Blank**. This signal is an indicator of proper assay performance, especially of washing efficacy, and is used for net OD calculations, if required. Blank OD should be <0.3.
- Run a set of **Calibrators**, which validate that the assay was performed to specifications: **10 U/ml** should give a high signal (>1.5 OD); **1 U/ml** should give a low signal which can be used to discriminate at the Positive/Negative threshold (see Interpretation of Results, p. 5).
- Run a range of sample dilutions for expected higher positives that allows calculation of antibody **Titer** (when specific titer is at least 4-fold higher than non-immune). See **Method C**.
- Run samples in duplicate if used for quantitation; non-immunes that are significantly lower than immunes may be run in singlicate. The Calibrators that are used for quantitation, e.g., for between-assay normalization, should be run in duplicate. When determining titer from a dilution curve, singlicates can be run if more than two dilution points are used for titer calculations.

Plate Set-up

Bring all reagents to room temperature (18-30°C) equilibration (at least 30 minutes).

- Determine the number of wells for the assay run. Duplicates are recommended, including 8 Calibrator wells and 2 wells for each sample control to be assayed.
- Remove the appropriate number of microwell strips from the pouch and return unused strips to the pouch. Reseal the pouch and store refrigerated.
- Add 200-300ul Working Wash Solution to each well and let stand for about 5 minutes. Aspirate or dump the liquid and pat dry on a paper towel before sample addition.

Assay Procedure

ALL STEPS ARE PERFORMED AT ROOM TEMPERATURE. After each reagent addition, gently tap the plate to mix the well contents prior to beginning incubation.

- 1st Incubation [100ul – 60 min; 4 washes]**
 - Add 100ul of calibrators, samples and controls each to pre-determined wells.
 - Tap the plate gently to mix reagents and incubate for 60 minutes.
 - Wash wells 4 times and pat dry on fresh paper towels. As an alternative, an automatic plate washer may be used. Improper washes may lead to falsely elevated signals and poor reproducibility.
- 2nd Incubation [100ul – 30 min; 5 washes]**
 - Add 100ul of diluted Anti-Mouse IgG HRP to each well.
 - Incubate for 30 minutes.
 - Wash wells 5 times as in step 2.
- Substrate Incubation [100ul – 15 min]**
 - Add 100ul TMB Substrate to each well. The liquid in the wells will begin to turn blue.
 - Incubate for 15 minutes in the dark, e.g., place in a drawer or closet.

Note: If your microplate reader does not register optical density (OD) above 2.0, incubate for less time, or read OD at 405-410 nm (results are valid).
- Stop Step [Stop: 100ul]**
 - Add 100ul of Stop Solution to each well.
 - Tap gently to mix. The enzyme reaction will stop; liquid in the wells will turn yellow.
- Absorbance Reading**
 - Use any commercially available microplate reader capable of reading at 450nm wavelength. Use a program suitable for obtaining OD readings, and data calculations if available.
 - Read absorbance of the entire plate at 450nm using a single wavelength within 30 minutes after Stop Solution addition. If available, program to subtract OD at 630nm to normalize well background.

PRECAUTIONS AND SAFETY INSTRUCTIONS

Calibrators, Sample Diluent, and Antibody HRP contain bromonitrodioxane (BND: 0.05%, w/v). Stop Solution contains dilute sulfuric acid. Follow good laboratory practices, and avoid ingestion or contact of any reagent with skin, eyes or mucous membranes. All reagents may be disposed of down a drain with copious amounts of water. Stop Solution contains 1% sulfuric acid. Follow good laboratory practices. <http://4adi.com/objects/catalog/product/extras/ELISA-Kit-SDS-MSDS-Set-1.pdf>

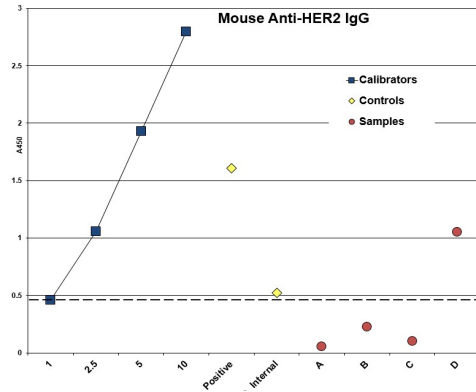
INTERPRETATION OF RESULTS

Method A. Antibody Activity Threshold Index

Compare Samples to 1 U/ml Calibrator or Internal Control

=Positive/Negative Cut-off.

Example:



Results

The **sensitivity** of the assay to detect anti-HER2 IgG, from either natural immune response or vaccination, is controlled so that the **1 U/ml Calibrator** represents a threshold OD for most true positives in mouse serum diluted 1:25 to 1:100. Visual inspection of the data in the above graph shows the following:

Calibrators – dilution curve of an anti-HER2 antibody, derived from HER2 immunization, shows the OD range of the assay; high value indicates optimal sensitivity of the assay.

1 U/ml: a 'Cut-off' line has been drawn to indicate a threshold distinguishing between **Positive/Negative**. This is not a clear-cut threshold, rather a low OD area that could represent either low positives or high background negatives.

Positive Control – antiserum reactive to HER2; net OD >0.5. This Control can be used to normalize between-assay variation.

Internal Control – a true positive from an immune mouse that represents the investigator's experience in distinguishing low positive from negative samples (not in kit). This should be run in each assay to supplement the 1 U/ml Calibrator for Positive/Negative discrimination purposes.

Samples A,B,C,D – 3 samples (A, B, C) are **negative**: below the threshold; 1 sample (D) is **positive**: clearly above the threshold.

The **1 U/ml Calibrator** can be used to calculate a **Threshold Index** that numerically discriminates Positive/Negative (see p6):

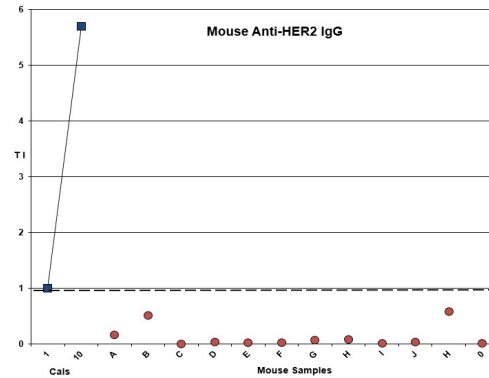
❖ Divide each Sample net OD by the 1 U/ml Calibrator net OD. Values above 1.0 are a measure of **Positive** Antibody Activity; below 1.0 is **Negative** for antibody.

ASSAY PERFORMANCE

Example:

Mouse Serum IgG

A panel of sera from non-immunized laboratory animals was tested for anti-HER2 IgG (1:100 dilution). **Threshold Index** was calculated using the 1 U/ml Cal.



Results

Anti-HER2 IgG: all samples (12) were negative (below 1.0 threshold) at 1:100 dilution.

The low signals of most samples suggest that lower dilutions (e.g., 1/25) of serum may be more useful to detect possible low level positives (see **sensitivity** below).

Notes:

- Positives** may be due to prior encounter with HER2 or non-HER2 proteins with common epitopes, or may be an aspect of the innate immune repertoire.
- When the **Positive Index** is **above 5.0**, using a dilution curve to calculate titer is a more accurate quantitation method (see Method C).
- The **sensitivity** of the assay may be adjusted by changing the sample dilutions: a) increase dilution (e.g., 1/200) to lower the signals of borderline positives to negative; b) decrease dilution (e.g., 1/50) to convert borderline samples to positive. With the latter, the values of negatives may increase, so an alternative threshold should be considered using known negatives to develop a **Positive Index** (see below) or use an **Internal Control** (Page 5).

Method B. Positive Index

Experimental sample values may be expressed relative to the values of Control or Non-immune samples, by calculation of a **Positive Index**. One typical method is as follows:

- Calculate the net OD mean + 2 SD of the Control/Non-immune samples = **Positive Index**.
- Divide each sample net OD by the Positive Index. Values above 1.0 are a measure of **Positive** Antibody Activity; below 1.0 are **Negative** for antibody.

INTERPRETATION OF RESULTS (cont)

A sample value would be **Positive** if significantly above the value of the pre-immune serum sample or a suitably determined non-immune panel or pool of samples, tested at the same sera dilution.

This calculation also **quantifies** the positive Antibody Activity level, assigning a higher value to samples with higher Antibody Activity, and vice versa.

Method C. Titers from Sample Dilution Curves

The titer of elevated antibody activity calculated from a dilution curve of each sample is recommended as the most accurate quantitative method. Best precision can be obtained using the following guidelines:

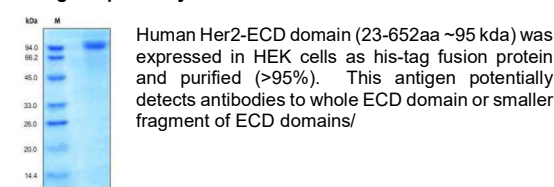
- Use an OD value Index in the mid-range of the assay (2.0 – 0.5 OD); this provides the best sensitivity and reproducibility for comparing experimental groups and replicates. An arbitrary 1.0 OD is commonly used.
- Prepare serial dilutions of each sample to provide a series that will produce signals higher and lower than the selected index. With accurate diluting, duplicates may not be required if at least 4 dilutions are run per sample.
- A 5-fold dilution scheme is useful to efficiently cover a wide range which produces ODs both above and below 1.0 OD. The dilution scheme can be tightened to 3-fold or 2-fold for more precise comparative data.
- The Positive and Sensitivity Control values can be used to normalize inter-assay values.

Calculations

- On a log scale of inverse of Sample Dilution as the x-axis, plot the OD values of the two dilutions of each positive sample having ODs above and below the OD value of the Index (arbitrary or selected Calibrator).
- From a point-to-point line drawn between the two sample ODs, read the dilution value (x-axis) corresponding to the OD of the selected Index
= **IgG Antibody Activity Units**

PRODUCT SPECIFICATIONS

Antigen Specificity



Antibody Specificity

The anti-mouse IgG-HRP used in the kit is specific for mouse IgG with no significant detection of IgM, IgA, IgE or other IgG subclass antibodies. This kit is optimized for mouse samples. ADI has similar kits for human, monkey and another species.

Instruction Manual No. M-200-620-HRH

Mouse Anti-HER2 Protein (ECD) IgG ELISA Kit

Catalog # 200-620-HRH, 96 tests

For the Detection and Quantitation of Anti-HER2 extracellular domain (ECD) IgG in Serum or Plasma or other biological fluids

For research use only, not for diagnostic or therapeutic use.



**ALPHA DIAGNOSTIC
INTERNATIONAL**

6203 Woodlake Center Drive • San Antonio • Texas 78244 • USA.

Phone (210) 561-9515 • Fax (210) 561-9544
Toll Free (800) 786-5777

service@4adi.com
www.4adi.com

ELISA Kit Components	Amount	Part
HER2 Coated Strip Plate	8-well strip (12)	200-511
Anti-HER2 Positive Control	0.65 ml	200-622PC
Anti-HER2 Calibrator	1 U/ml 0.65 ml	200-622B
Anti-HER2 Calibrator	2.5 U/ml 0.65 ml	200-622C
Anti-HER2 Calibrator	5 U/ml 0.65 ml	200-622D
Anti-HER2 Calibrator	10 U/ml 0.65 ml	200-622E
Anti-Mouse IgG HRP Conjugate (100X)	0.15 ml	200-623.112
Sample Diluent (20x)	10 ml	SD20T
Low NSB Sample Diluent	30 ml	TBTm
Wash Solution Concentrate (100X)	10 ml	WB-100
TMB Substrate	12 ml	80091
Stop Solution	12 ml	80101
Product Manual	1	200-620-HRH