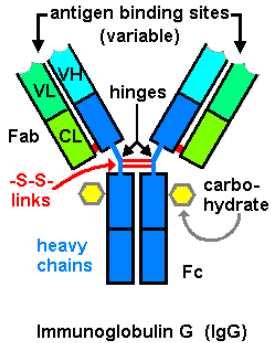


Product Data Sheet

Human IgG (>98%, Bulk)

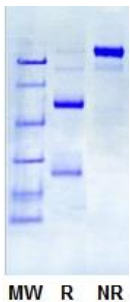
- **Cat#** 20007-1-BP-1 Human IgG (>98%, non-immune, control, powder, azide free) **Size:** 1 g
- **Cat#** 20007-1-BP-10 Human IgG (>98%, non-immune, control, powder, azide free) **Size:** 10 g



Immunoglobulin G (IgG) is a type of antibody. It is a protein complex composed of four peptide chains—two identical heavy chains and two identical light chains arranged in a Y-shape typical of antibody monomers. Each IgG has two antigen binding sites. Representing approximately 75% of serum antibodies in humans, IgG is the most common type of antibody found in the circulation. IgG molecules are created and

released by plasma B cells.

Human IgG was purified from serum or plasma by a combination of column chromatography (Sephadex, and DEAE-ion exchange columns) and immunoaffinity chromatography. The resulting preparation was judged to be >98% pure by immuno electrophoresis (IEP) and SDS-PAGE. It is supplied as unlabeled or coupled to biotin, HRP, FITC, PE, Cy5 etc.



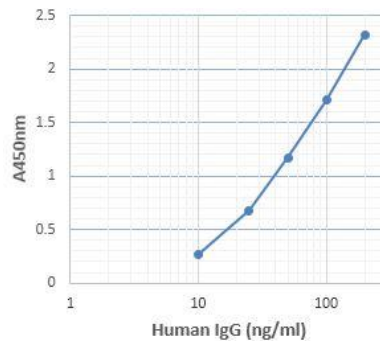
Human IgG on SDS-APGE- MW=Mol markers, R=reduced, NR (non-reduced)

Purity >98% (SDS-PAGE)
Extinction 1.36
Form Powder (lyophilized from 0.01M Phosphate buffer in 0.15M NaCl) azide free
Solubility Water or buffer at 10 mg/ml or higher
pH 7.2 ± 0.2
Storage 2-4°C for 1 year

Recommended Usage

Suitable for use as isotype control, non-immune control, carrier protein in various immunoassays, protein stabilizers etc.

All human derived material has been tested negative for HIV, HCV, and HbSAg. Nevertheless, all precautions should be taken and samples be treated as potentially hazardous. For research use only (RUO), not for diagnosis, cure or prevention of the disease



Human IgG testing by ELISA kit #1750

Related Material available for ADI

Catalog#	ProdDescription
20007-1-1	Human IgG, purified (serum, non-immune, isotype control)
20007-1-B	Human IgG-Biotin conjugate (isotype control, non-immune), purified
20007-1-F	Human IgG-FITC conjugate (isotype control, non-immune), purified
20007-1-FAB	Human IgG Fab fragment, purified
20007-1-FAB2	Human IgG F(ab') ₂ fragment, purified
20007-1-FAB2-B	Human IgG Fab2 fragment-Biotin Conjugate, purified
20007-1-FAB2-F	Human IgG Fab2 fragment-FITC Conjugate, purified
20007-1-FAB2-HP	Human IgG Fab2 fragment-HRP Conjugate, purified
20007-1-FAB-B	Human IgG Fab fragment-Biotin Conjugate, purified
20007-1-FAB-F	Human IgG Fab fragment-FITC Conjugate, purified
20007-1-FAB-HP	Human IgG Fab fragment-HRP Conjugate, purified
20007-1-FC	Human IgG (Fc) fragment, purified
20007-1-Fc-B	Human IgG Fc-Biotin conjugate (isotype control, non-immune), purified
20007-1-Fc-F	Human IgG Fc-FITC conjugate (isotype control, non-immune), purified
20007-1-Fc-HP	Human IgG Fc-HRP conjugate (isotype control, non-immune), purified
20007-1-HP	Human IgG-HRP Conjugate (isotype control)
20007-F100	Human IgG-Fc fragment purified (isotype control)
20007-F1000	Human IgG-Fc fragment purified (isotype control)
20007-G3-1	Human IgG3, Myeloma Plasma
20007-G3-1P	Human IgG3, Native Plasma
20007-G3-B	Human IgG3-Biotin Conjugate (-ve control)
20007-G3-F	Human IgG3-FITC Conjugate (-ve control)
20007-G3-H	Human IgG3-HRP Conjugate (-ve control)
20007-G4-500	Human IgG4, Myeloma Plasma
20007-G4-B	Human IgG4-Biotin Conjugate (-ve control)
20007-G4-F	Human IgG4-FITC Conjugate (-ve control)
20007-G4-H	Human IgG4-HRP Conjugate (-ve control)

20007-1-BP-1-Human-IgG-Pure-Bulk

160203A