

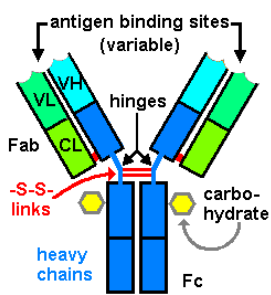
**Product Data Sheet**

Rabbit IgG (non-immune, isotype control, CHIP/IP grade)

**Cat#** 20009-1-CH

Rabbit IgG (non-immune, isotype control, CHIP/IP grade)

**Size:** □ 100 ug



Immunoglobulin G (IgG)

Immunoglobulin G (IgG) is a type of antibody. It is a protein complex composed of four peptide chains—two identical heavy chains and two identical light chains arranged in a Y-shape typical of antibody monomers. IgG has molecular weight of approximately 150 kDa, heavy or H chain approximately 50 kDa and light or L chain 25 kDa. Each IgG has two antigen binding sites. Representing approximately 75% of serum antibodies in

humans, IgG is the most common type of antibody found in the circulation.

**Source**

Normal Rabbit IgG (CHIP grade) is an isotype control antibody, which is used to estimate the non-specific binding of target primary antibodies due to Fc receptor binding or other protein-protein interactions. An isotype control antibody should have the same immunoglobulin type and be used at the same concentration as the test antibody.

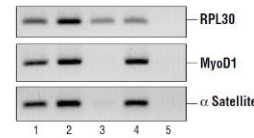
A healthy non-immunized population of rabbits was used to collect serum. IgG was prepared by ammonium sulfate, and column chromatography (Sephadex, and DEAE-ion exchange columns) and protein-A affinity purifications. The resulting preparation was judged to be >95% pure by IEP and SDS-Page.

**Form and Storage**

The normal rabbit IgG is provided in a buffer (10 mM HEPES (pH 7.5), 150 mM NaCl, 100 µg/ml BSA and 50% glycerol) at ~ 1 mg/ml. No preservatives have been added. The product should be **stored at -20oC** for storage. The antibody does not freeze in the buffer and allows quick usage in liquid form. It is stable for a minimum of 1 year. Do not store diluted solutions. Sodium azide, an inhibitor of peroxidase, must be avoided if used with antibody-HRP conjugates.

**Suggested Uses**

All control antibodies should be used at the same concentration (not dilution) as the specific primary antibody. Higher background may result if excessive amounts of control IgG isotype control is used.



Chromatin immunoprecipitations were performed using digested chromatin from HeLa cells and either Histone H3 Rabbit mAb (ChIP Formulated) (lane 2), Rpb1 CTD (lane 3), Di-Methyl Histone H3 (Lys9) Antibody (lane 4) or Normal Rabbit IgG (#200091-CH, lane 5). Purified DNA was analyzed by standard PCR methods using primers specific for the RPL30 gene, the MyoD1 gene or the heterochromatic alpha satellite repeat element. PCR products were observed for each primer set in the input sample (lane 1) and various protein-specific immunoprecipitations but no PCR products were observed with immunoprecipitation using Normal Rabbit IgG #2729 (#20009-1-CH; lane 5).

*This product is for in vitro research use only.*

**Related items available**

Catalog#	Prod Description
20009-1	Rabbit IgG, purified (serum non-immune, isotype control)
20009-1-100	Rabbit IgG (-ve control for flow cytometry)
20009-1-200	Rabbit IgG Control Sera
20009-1-FAB	Rabbit IgG Fab fragment, purified
20009-1-FAB2	Rabbit IgG F(ab') <sub>2</sub> fragment, purified
20009-1-FAB-B	Rabbit IgG Fab-Biotin Conjugate, purified
20009-1-FAB-F	Rabbit IgG Fab-FITC Conjugate, purified
20009-1-FAB-HP	Rabbit IgG Fab-HRP Conjugate, purified
20009-B	Rabbit IgG (Whole, non-immune)-Biotin conjugate
20009-B11	cat# change to 20009-BT-1: Rabbit biotinylated IgG, purified
20009-BT-1	Rabbit IgG-biotinylated (isotype control)
20009-CST	Normal Rabbit IgG (non-immune) formulated in Thymoglobulin buffer
20009-F	Rabbit IgG-FITC conjugate (isotype control)
20009-FAB2-B	Rabbit IgG F(ab') <sub>2</sub> -biotin conjugate, isotype control
20009-FAB2-F	Rabbit IgG F(ab') <sub>2</sub> -FITC conjugate, isotype control
20009-FAB2-HP	Rabbit IgG F(ab') <sub>2</sub> -HRP conjugate, isotype control
20009-FAB2-PE	Rabbit IgG F(ab') <sub>2</sub> -R-PE conjugate, isotype control
20009-Fc-B	Rabbit IgG F(c)-biotin conjugate, isotype control
20009-Fc-F	Rabbit IgG F(c)-FITC conjugate, isotype control
20009-Fc-HP	Rabbit IgG F(c)-HRP conjugate, isotype control
20009-Fc-PE	Rabbit IgG F(c)-R-PE conjugate, isotype control
20009-HP	Rabbit IgG-HRP conjugate (isotype control)
20009-PE	Rabbit IgG-PE conjugate (isotype control)
20009-WA-1	Rabbit IgG, purified (serum non-immune, isotype control), without azide, powder
20009-WA-5	Rabbit IgG, purified (serum non-immune, isotype control), without azide, powder