

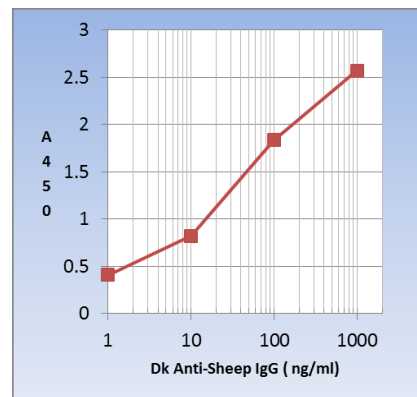
Donkey Anti-Sheep IgG (H+L or whole IgG) Antibodies (Secondary Antibodies)

Cat# 30326-AF-BLK Donkey Anti-Sheep IgG, unlabeled, aff pure **Size:** Bulk (1L-10 L)

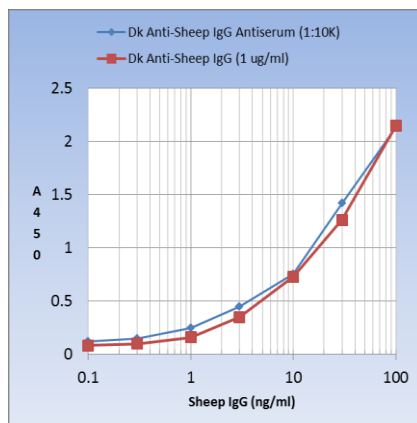
Healthy populations of donkeys were immunized with antigen grade whole **sheep IgG**. Antibodies have been isolated using ammonium sulfate, ion-exchange, and affinity chromatography to remove non-specific antibodies. IgG purity >95% by SDS-PAGE. Specificity of antibody has been tested using IEP, immunodiffusion, and ELISA. The product reacts with sheep IgG and it may also react with sheep IgA or IgM.

Antibody Titer Analyses

Sheep IgG was coated on ELISA plate and antibody was diluted to 1, 10, 100, 1000 ng/ml and tested using ADI Donkey IgG ELISA kit #80172 in 105 min assay at room temp.



Donkey anti-sheep IgG (aff pure) reacted with sheep IgG up to very low concentrations of 1 ng/ml.



Donkey anti-sheep IgG aff pure reacted with sheep IgG coated on ELISA wells (0.01-100 ng/ml). At 1 ug/ml, the sensitivity is 0.1 ng/ml

Form and Storage

The antibody is supplied in PBS, pH 7.4, and 0.05% azide (or see lot sp. conc on the vial, typically 10 mg/ml). Reconstitute powder in water to prepare stock solution. Store at -20oC in suitable aliquots. Stability is ~3 yrs. Do not freeze and thaw.

Recommended Working Dilution for ELISA

Working dilution for the specific application should be determined by the investigator to obtain the best conditions. Working solution should be prepared immediately before use and diluted solution should be discarded.

Recommended secondary antibody conjugate

#80920-HRP, Rabbit Anti-Donkey IgG (H+L)-HRP conjugate

Related Material available for ADI

Catalog#	ProdDescription
80150	Mouse Serum Antibody detection ELISA kit
80155	Rat Serum Antibody detection ELISA kit
80160	Rabbit Serum Antibody detection ELISA kit
80165	Goat Serum Antibody detection ELISA kit
80166	Sheep Serum Antibody detection ELISA kit
80170	Human Serum Antibody detection ELISA kit
80171	G. Pig Serum Antibody detection ELISA kit
80172	Donkey Serum Antibody detection ELISA kit
80173	Horse Serum Antibody detection ELISA kit
80175	Monkey Serum Antibody detection ELISA kit
80176	Chicken Serum Antibody detection ELISA kit
80177	Chicken IgY Antibody detection in whole egg yolks ELISA kit
80180	Hamster Serum Antibody detection ELISA kit
80185	Bovine Serum Antibody detection ELISA kit
80186	Pig Serum Antibody detection ELISA kit
80187	Turkey Serum Antibody detection ELISA kit
80188	Ferret Serum Antibody detection ELISA kit
80188-A	Ferret Serum antigen-specific IgA Antibody detection and titration ELISA kit
80188-G	Ferret Serum antigen-specific IgG Antibody detection and titration ELISA kit
80188-M	Ferret Serum antigen-specific IgM Antibody detection and titration ELISA kit
80920-UL	Anti-Donkey IgG (H+L), aff pure
80920-HRP	Anti-Donkey IgG (H+L)-HRP conjugate
80920-BTN	Anti-Donkey IgG (H+L)-Biotin conjugate
80950-UL	Anti-Donkey IgG (Fc), unlabeled aff pure
80950-HRP	Anti-Donkey IgG (Fc)-HRP conjugate
80920-F	Anti-Donkey IgG (H+L)-FITC conjugate

30326-AF-BLK

140503A