

Product Specification Sheet

Anti-Mouse CD157 receptor (BP-3/BST-1) Antibodies

Cat. # MCD157-M **Rat monoclonal** anti-mouse CD157 receptor IgG

SIZE: 100 ug

CD157 also known as BP-3 Alloantigen or Bone marrow STromal cell antigen-1 (BST-1), is a 38-48 KDa differentially glycosylated glycosylphosphatidylinositol (GPI) anchored cell surface glycoprotein. CD157, like CD38 belongs to a family of genetically related pleiotropic ectoenzymes. The CD157 antigen is expressed on thymocytes, bone marrow B cells, neutrophils, macrophages, stromal cells, intestinal epithelial cells, the collecting tubules of the kidney and reticular cells in lymph nodes.

The CD157 receptor has ADP ribosyl cyclase and cyclic ADP ribose hydrolase biochemical activities. Studies show CD157 is a receptor that induces reorganization of the cytoskeleton and significant changes in cell shape. CD157 is also a mediator of neutrophil adhesion and migration. Signals mediated by CD157 act through modulation of cytosolic [Ca²⁺]. CD157 is also involved in cellular adhesion to the extracellular matrix

Source of Antigen, Antibodies, Protein and controls

| | |
|------------------------|---|
| Antigen | T cell hybridoma J774, mouse spleen cells fused with rat NSO myeloma cells; antibody (IgG2b) |
| Ab Host/type | Rat, monoclonal IgG2b (#MCD157-M) purified from ascites |
| 2-ab | Goat Anti-Rat IgG-HRP conjugate Cat # 50320 (AP, biotin, FITC conjugates also available) |
| -ve control IgG | Cat # 20005-13, rat IgG2c (non-immune), purified, suitable for ELISA, Western, IHC as -ve control |

Form & Storage of Antibodies/Peptide Control

IgG (purified)

100ug solution lyophilized powder
Supplied in Buffer: PBS, pH 7.4, 0.1% BSA, 0.05% azide
Reconstitute powder in 100 ul PBS

Storage

Short-term: unopened, undiluted liquid vials at -20OC and powder at 4oC or -20oC..

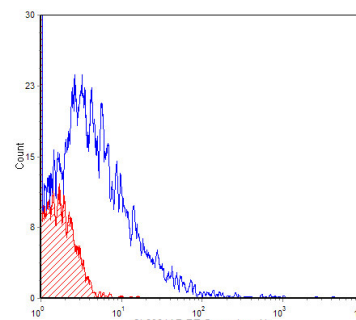
Long-term: at -20C or below in suitable aliquots after reconstitution. Do not freeze and thaw and store working, diluted solutions.

Stability: 6-12 months at -20oC or below.

Shipping: 4oC for solutions and room temp for powder

Recommended Usage

Flow cytometry (0.5-1 ug/10⁶ cells)



Mouse bone marrow stained with MCD157-M-PE conjugate (33% cells positive) blue color

Red color (small peak) IgG2c-FITC isotype control

ELISA (0.1-1 ug/ml).

Histochemistry & Immunofluorescence: not tested

Specificity & Cross-reactivity

Antibody recognizes mouse CD157 receptor by flow. Other species not tested.

General References: (1) Furnao A (2004) Intl. Immunoo. 8, 1396-1404; Itoh M (1998) Immunol. 161, 3974-3983; Ortolan E (2002) Cell Biochem. Funct. 20, 309-322; Seki M (2001) Immunol. 20, 725-742

*This product is for in vitro research use only.

Related material available from ADI

Rat Anti-Mouse CD157 IgG, unlabeled, FITC, Biotin and PE conjugates also available.

MCD157-M

91130A